







Smith.

WARNING  
DO NOT OPEN  
HOT WATER PRESSURE  
RELIEF VALVE

**WARNING**  
To prevent scalding, adjust the water heater temperature to 120°F (49°C).  
To prevent fire and explosion, do not use flammable liquids or gases near the water heater.  
Do not use the water heater for anything other than its intended purpose.  
Do not use the water heater for anything other than its intended purpose.  
Do not use the water heater for anything other than its intended purpose.

**ENERGY GUIDE**  
Standard Energy Factor (SEF) 0.65  
Energy Factor (EF) 0.65  
2

Model No. 40  
Capacity (Gallons) 40  
Input (BTU/hr) 33,000  
Output (Gallons per Minute) 2.5  
Venting (Type) B-vent  
Venting (Material) Aluminum  
Venting (Diameter) 6"

Serial No. 123456789  
Date of Manufacture 12/12/12

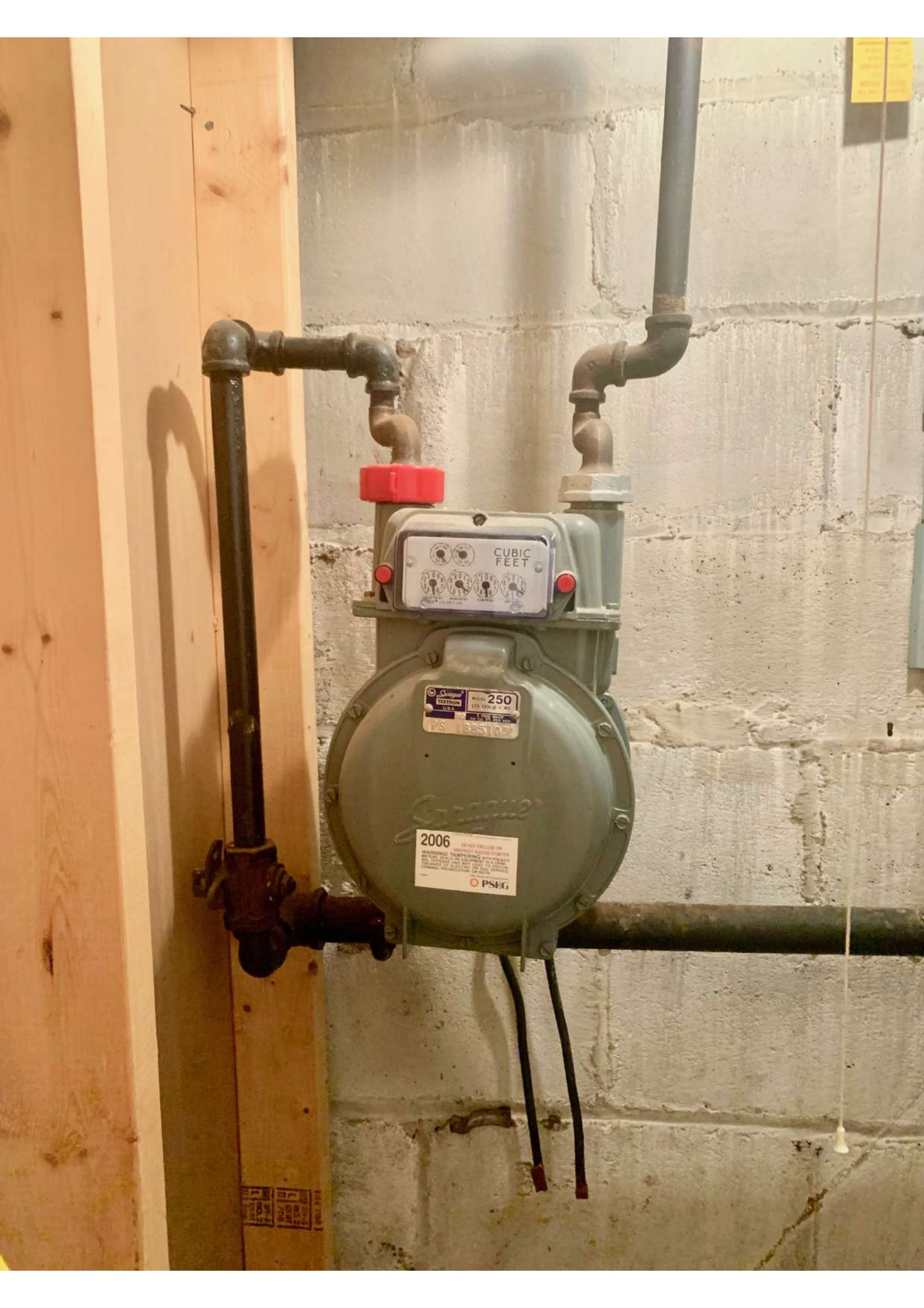
Smith  
Water Heaters



ENERGYGUIDE  
↓  
80.3  
V



ENERGYGUIDE  
80.3  
V



CUBIC FEET

250  
PS 1885105

2006  
WARNING: TAMPERING MAY BE PENALIZED BY LAW  
PSIG

100%  
100%  
100%

DO NOT REMOVE OR BUSTURE  
CLEARANCE  
IF WORK IS TO BE DONE  
ON THIS EQUIPMENT  
BEFORE WORKING  
ON THIS EQUIPMENT



OFF  
MAIN  
ON



